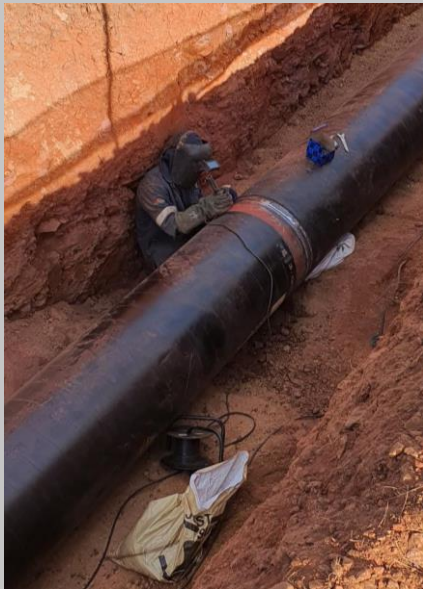


LENASIA HIGH LEVEL RESERVOIR PIPELINE



PROJECT NUMBER: 16299

Lenasia High Level Reservoir Pipeline



DISCIPLINE/S: Water Infrastructure
Pipeline

PROJECT DESCRIPTION:

The Lenasia High Level Reservoir Pipeline forms part of an overall project of which the scope entails the design, tender and construction of a 15ML circular concrete reservoir, 1.2km ND600 bulk steel water pipeline and upgrade of existing pump station to 32ML a day at 75m head (555kW).

Upgrade of the pump station required the existing fibre cement rising main to be upgraded to improve the flow rate at which water can be supplied to the ne Lenasia High Level Reservoir. A new DN600 welded steel pipeline , of 1.1 km, was designed to replace the existing fibre cement rising main.

The now redundant fibre cement rising main was converted to a scour pipeline and sections of DN450 concrete stormwater pipe, totalling approximately 900 m, was installed to connect the scour and overflow pipes of the Lenasia High Level and Hospital Hill Reservoirs.

CLIENT:

Johannesburg Water

CONTACT:

Trevor Mbonani
011 688 6682

DATE:

January 2014 - Present

Project Value

R 15 million

The objectives achieved through this project were:

- Improvement of the reliability of supply and shortening the duration in which the Lenasia High Level Reservoir can be supplied with water, thereby improving supply to a number of townships an Lenasia South.
- To allow safe overflowing and scouring of the existing Lenasia High Level Reservoir, the new High Level Reservoir, and the Lenasia Hospital Hill Reservoir.

SALIENT FEATURES:

During the design of the pipeline the pipeline route was uninhabited, and the project could be treated as a green fields project. However by the time construction started many informal structures were erected on and around the pipeline route and the project required careful consultation



PROJECT SHEET: INTERNAL INFORMATION

LAST UPDATE: June 2021

UPDATED BY: XXX

PROJECT LEADER: XXX

PROJECT MANAGER: XXX

KEYWORDS: PIPELINE, WATER

PROJECT SHEET PHOTO PROPERTIES: